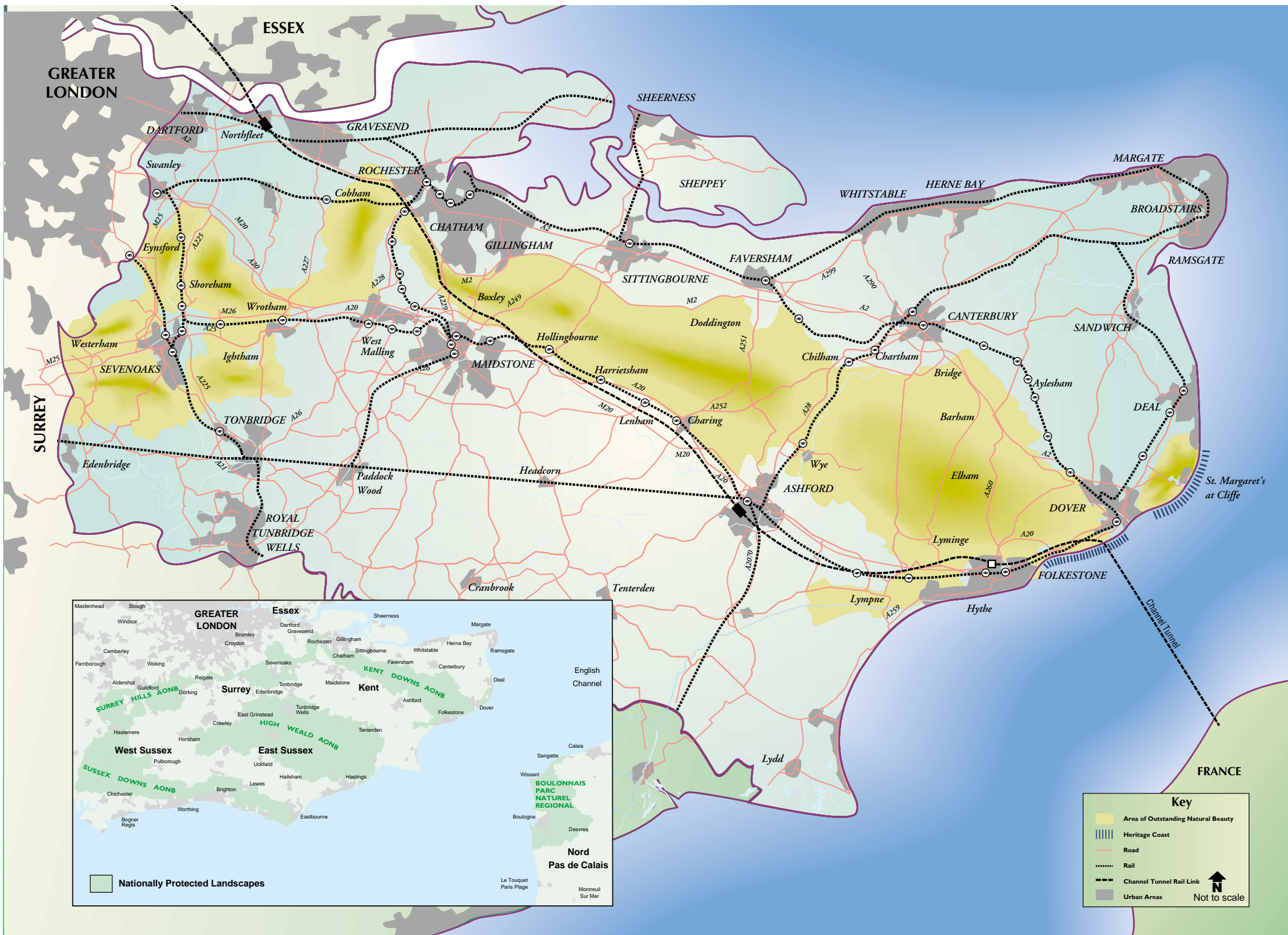


Kent Downs Area of Outstanding Natural Beauty A Management Plan for 2004-2009

Kent Downs Area of Outstanding Natural Beauty • A Management Plan for 2004-2009



Focusing on the future of this nationally important landscape
April 2004



The lady orchid (*Orchis purpurea*) we have chosen as the emblem of the Kent Downs is beautiful, scarce and special to Kent, just like the downs and woodland it inhabits. Like our countryside, it is vulnerable to the pressures of change, but survives by continual renewal. We want the lady orchid and its downland home to remain alive, not remembered only in books and museums. It must thrive for future generations to enjoy.

This Management Plan was formally adopted in February 2004, as required under Section IV of the Countryside and Rights of Way Act 2000, by all the local authorities of the Kent Downs AONB, namely:



It has received formal approval from: the Countryside Agency and English Nature



The production and publication of the Management Plan has been funded by: the Countryside Agency, the AONB local authorities and the European Regional Development Fund.



Photographs: © Countryside Agency/Mike McGoran; © Countryside Agency/Tina Stallard; © Dan Tuson; © Kent Downs AONB Unit; © Henry Moore Foundation; © Angel Design
Printed on elemental chlorine-free paper using wood pulp obtained from sustainable forests.



Kent Downs AONB Unit
Invicta House, Sessions Square
Maidstone, Kent ME14 1XX
01622 221522
kentdowns@kent.gov.uk
www.kentdowns.org.uk

From summer 2004:
West Barn, Penstock Hall, East Brabourne, Ashford TN25 5LL